

GYON LINE EMBUTIDO

VIDA UTIL 30.000 Hrs



EMPOTRABLE DE TECHO



OPCIÓN DIMERIZABLE DALI



INTERIOR



ADMITE EMERGENCIA



CRI >=90



APERTURA 15°/30°/45°



UGR



DESCRIPCIÓN

TIPO DE LUMINARIA: Empotrable de Techo Lineal

TIPO DE TECHO: Durlock

SISTEMA ÓPTICO: Ópticas concentradoras

Antideslumbrantes

DISTRIBUCIÓN DE LUZ: Variable con ópticas - Difusor

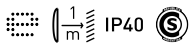
Optimax - Reflector en lámpara

MATERIALES: Cuerpo en Extrusión de Aluminio

TRATAMIENTO DE SUPERFICIE: Pintura polvo poliéster

FUENTE DE LED: Externa incorporada

DRIVERS: Helvar / Philips



COLORES



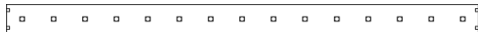
Forte HPw5L



Forte HPw10L



Forte Gen4 2ft20



Forte HPw15L



Dali

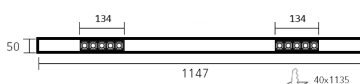
CASAMBI Helvar LEDiL tuya TRIDONIC

INFORMACIÓN TÉCNICA

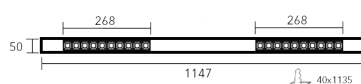
CÓDIGO	PLACAS	CANTIDAD DE ÓPTICAS	CABEZALES	POTENCIA	FLUJO	HUECO INDIVIDUAL	HUECO LÍNEA CONTINUA (LC)	LARGO FRENTE (LF)
GLE113	-	2 x 5	-	20 w	1440 lm	40x1135mm	40x1126mm	1147mm
GLE114	-	2 x 10	-	40 w	2880 lm	40x1135mm	40x1126mm	1147mm
GCE113	1x2200lm	2 x 5	-	35 w	1440lm +2200lm	40x1135mm	40x1126mm	1147mm
GEP113	1x2200lm	-	2xLOOK12	39 w	2x1250lm + 2200lm	40x1135mm	40x1126mm	1147mm
GEC113	-	2x5	2xLOOK12	39w	2x1250lm + 1440lm	40x1135mm	40x1126mm	1147mm
GEP114	1x2200lm	-	2x2600GU	29w	2x560lm + 2200lm	40x1135mm	40x1126mm	1147mm
GEC114	-	2x5	2x2600GU	29w	2x560lm + 1440lm	40x1135mm	40x1126mm	1147mm

DIMENSIONES

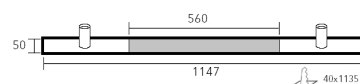
GLE113



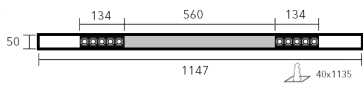
GLE114



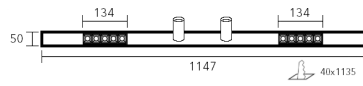
GEP113-GEP114



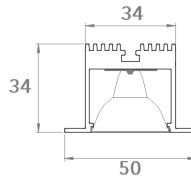
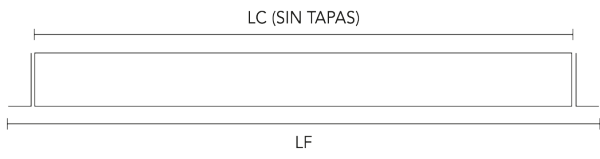
GCE113



GEC113-GEC114



Perfil



ILUMINANCIA

GLE113

GLE114

